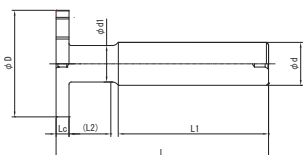
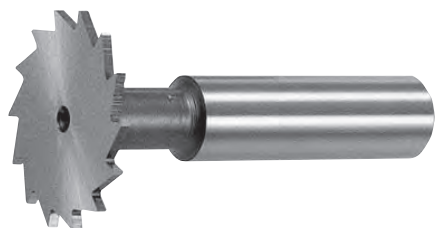
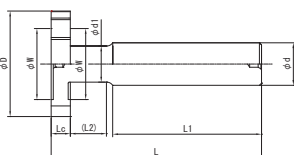


KC

キーシードカッター Woodruff Key-Seat Cutter



形状A



形状B

外径許容差(φD) 16以下 +0.18 ~ +0.30
16を超え 28以下 +0.21 ~ +0.35
28を超え 45以下 +0.26 ~ +0.43
45を超え 80以下 +0.30 ~ +0.50

刃幅許容差(Lc) 3以下 -0.014 ~ -0.028
3を超え 6以下 -0.020 ~ -0.038
6を超え 10以下 -0.025 ~ -0.047
10を超え 18以下 -0.032 ~ -0.059

SKH51

外径 φD	刃幅 Lc	柄径 φd	柄長 L1	首径 φd1	首長(フラット) (L2)	全長 L	形状	逃げ径	
								φW	刃数
5	0.3	6	30	2.5	6.3	40	A		8
5	0.4	6	30	2.5	6.2	40	A		8
5	0.5	6	30	2.5	6.1	40	A		8
5	0.6	6	30	2.5	6	40	A		8
5	0.7	6	30	2.5	5.9	40	A		8
5	0.8	6	30	2.5	5.8	40	A		8
5	0.9	6	30	2.5	5.7	40	A		8
5	1	6	30	2.5	5.6	40	A		8
5	1.1	6	30	2.5	5.5	40	A		8
5	1.2	6	30	2.5	5.4	40	A		8
5	1.3	6	30	2.5	5.3	40	A		8
5	1.4	6	30	2.5	5.2	40	A		8
5	1.5	6	30	2.5	5.1	40	A		8
5	2	6	30	2.5	4.6	40	A		8
5	2.5	6	30	2.5	4.1	40	A		8
5	3	6	30	2.5	3.6	40	A		8
6	0.3	6	30	2.5	6.3	40	A		8
6	0.4	6	30	2.5	6.2	40	A		8
6	0.5	6	30	2.5	6.1	40	A		8
6	0.6	6	30	2.5	6	40	A		8
6	0.7	6	30	2.5	5.9	40	A		8
6	0.8	6	30	2.5	5.8	40	A		8
6	0.9	6	30	2.5	5.7	40	A		8
6	1	6	30	2.5	5.6	40	A		8
6	1.1	6	30	2.5	5.5	40	A		8
6	1.2	6	30	2.5	5.4	40	A		8
6	1.3	6	30	2.5	5.3	40	A		8
6	1.4	6	30	2.5	5.2	40	A		8
6	1.5	6	30	2.5	5.1	40	A		8
6	2	6	30	2.5	4.6	40	A		8
6	2.5	6	30	2.5	4.1	40	A		8
6	3	6	30	2.5	3.6	40	A		8

被削材種 型番	鋳物	炭素鋼	合金鋼	工具鋼	調質鋼	ステンレス鋼	アルミ合金	銅合金	チタン合金	耐熱合金
	FC, FCD	S45C	SCM	SKD	NAK, HPM	SUS	Al	Cu	Ti6Al4V	インコネル
硬度 KC	~200HB	~200HB	~250HB	~35HRC	~45HRC					
	○	○	○			△	○	○		

首長(L2)寸法は、首径(φd1)と柄径(φd)のつながりがRのため参考値です。

切削条件 P.297

形状Bの両側面のヌスミ(ニゲ)の深さ P.314

外径 φ D	刃幅 L c	柄径 φ d	柄長 L 1	首径 φ d 1	首長(フラット) (L 2)	全長 L	形状	逃げ径 φ W	刃数
8	0.4	10	35	3.5	8.9	50	A		8
8	0.5	10	35	3.5	8.8	50	A		8
8	0.6	10	35	3.5	8.7	50	A		8
8	0.7	10	35	3.5	8.6	50	A		8
8	0.8	10	35	3.5	8.5	50	A		8
8	0.9	10	35	3.5	8.4	50	A		8
8	1	10	35	3.5	8.3	50	A		8
8	1.1	10	35	3.5	8.2	50	A		8
8	1.2	10	35	3.5	8.1	50	A		8
8	1.3	10	35	3.5	8	50	A		8
8	1.4	10	35	3.5	7.9	50	A		8
8	1.5	10	35	3.5	7.8	50	A		8
8	1.6	10	35	3.5	7.7	50	A		8
8	1.7	10	35	3.5	7.6	50	A		8
8	1.8	10	35	3.5	7.5	50	A		8
8	1.9	10	35	3.5	7.4	50	A		8
8	2	10	35	3.5	7.3	50	A		8
8	2.1	10	35	3.5	7.2	50	A		8
8	2.2	10	35	3.5	7.1	50	A		8
8	2.3	10	35	3.5	7	50	A		8
8	2.4	10	35	3.5	6.9	50	A		8
8	2.5	10	35	3.5	6.8	50	A		8
8	2.6	10	35	3.5	6.7	50	A		8
8	2.7	10	35	3.5	6.6	50	A		8
8	2.8	10	35	3.5	6.5	50	A		8
8	2.9	10	35	3.5	6.4	50	A		8
8	3	10	35	3.5	6.3	50	A		8
8	3.5	10	35	3.5	5.8	50	A		8
8	4	10	35	3.5	5.3	50	A		8
10	0.4	12	35	4	8.6	50	A		8
10	0.5	12	35	4	8.5	50	A		8
10	0.6	12	35	4	8.4	50	A		8
10	0.7	12	35	4	8.3	50	A		8
10	0.8	12	35	4	8.2	50	A		8
10	0.9	12	35	4	8.1	50	A		8
10	1	12	35	4	8	50	A		8
10	1.1	12	35	4	7.9	50	A		8
10	1.2	12	35	4	7.8	50	A		8
10	1.3	12	35	4	7.7	50	A		8
10	1.4	12	35	4	7.6	50	A		8
10	1.5	12	35	4	7.5	50	A		8
10	1.6	12	35	4	7.4	50	A		8
10	1.7	12	35	4	7.3	50	A		8
10	1.8	12	35	4	7.2	50	A		8
10	1.9	12	35	4	7.1	50	A		8
10	2	12	35	4	7	50	A		8
10	2.1	12	35	4	6.9	50	A		8
10	2.2	12	35	4	6.8	50	A		8
10	2.3	12	35	4	6.7	50	A		8
10	2.4	12	35	4	6.6	50	A		8
10	2.5	12	35	4	6.5	50	A		8
10	2.6	12	35	4	6.4	50	A		8
10	2.7	12	35	4	6.3	50	A		8
10	2.8	12	35	4	6.2	50	A		8
10	2.9	12	35	4	6.1	50	A		8
10	3	12	35	4	6	50	A		8
10	3.5	12	35	4	5.5	50	A		8
10	4	12	35	4	5	50	A		8

KC

キーシードカッター
Woodruff Key-Seat Cutter

外径 φD	刃幅 L c	柄径 φ d	柄長 L 1	首径 φ d 1	首長(フラット) (L 2)	全長 L	形状	逃げ径 φ W	刃数
10	4.5	12	35	4	9.5	55	A		8
10	5	12	35	4	9	55	A		8
10	5.5	12	35	4	8.5	55	A		8
10	6	12	35	4	8	55	A		8
10	7	12	35	4	7	55	A		8
10	8	12	35	4	6	55	A		8
11	0.4	12	35	4.5	9	50	A		8
11	0.5	12	35	4.5	8.9	50	A		8
11	0.6	12	35	4.5	8.8	50	A		8
11	0.7	12	35	4.5	8.7	50	A		8
11	0.8	12	35	4.5	8.6	50	A		8
11	0.9	12	35	4.5	8.5	50	A		8
11	1	12	35	4.5	8.4	50	A		8
11	1.1	12	35	4.5	8.3	50	A		8
11	1.2	12	35	4.5	8.2	50	A		8
11	1.3	12	35	4.5	8.1	50	A		8
11	1.4	12	35	4.5	8	50	A		8
11	1.5	12	35	4.5	7.9	50	A		8
11	1.6	12	35	4.5	7.8	50	A		8
11	1.7	12	35	4.5	7.7	50	A		8
11	1.8	12	35	4.5	7.6	50	A		8
11	1.9	12	35	4.5	7.5	50	A		8
11	2	12	35	4.5	7.4	50	A		8
11	2.1	12	35	4.5	7.3	50	A		8
11	2.2	12	35	4.5	7.2	50	A		8
11	2.3	12	35	4.5	7.1	50	A		8
11	2.4	12	35	4.5	7	50	A		8
11	2.5	12	35	4.5	6.9	50	A		8
11	2.6	12	35	4.5	6.8	50	A		8
11	2.7	12	35	4.5	6.7	50	A		8
11	2.8	12	35	4.5	6.6	50	A		8
11	2.9	12	35	4.5	6.5	50	A		8
11	3	12	35	4.5	6.4	50	A		8
11	3.5	12	35	4.5	5.9	50	A		8
11	4	12	35	4.5	5.4	50	A		8
11	4.5	12	35	4.5	9.9	55	A		8
11	5	12	35	4.5	9.4	55	A		8
11	5.5	12	35	4.5	8.9	55	A		8
11	6	12	35	4.5	8.4	55	A		8
11	7	12	35	4.5	7.4	55	A		8
11	8	12	35	4.5	6.4	55	A		8
12	0.4	12	35	4.5	9	50	A		8
12	0.5	12	35	4.5	8.9	50	A		8
12	0.6	12	35	4.5	8.8	50	A		8
12	0.7	12	35	4.5	8.7	50	A		8
12	0.8	12	35	4.5	8.6	50	A		8
12	0.9	12	35	4.5	8.5	50	A		8
12	1	12	35	4.5	8.4	50	A		8
12	1.1	12	35	4.5	8.3	50	A		8
12	1.2	12	35	4.5	8.2	50	A		8
12	1.3	12	35	4.5	8.1	50	A		8
12	1.4	12	35	4.5	8	50	A		8
12	1.5	12	35	4.5	7.9	50	A		8
12	1.6	12	35	4.5	7.8	50	A		8
12	1.7	12	35	4.5	7.7	50	A		8
12	1.8	12	35	4.5	7.6	50	A		8
12	1.9	12	35	4.5	7.5	50	A		8

外径 φD	刃幅 L c	柄径 φ d	柄長 L 1	首径 φ d 1	首長(フラット) (L 2)	全長 L	形状	逃げ径 φ W	刃数
12	2	12	35	4.5	7.4	50	A		8
12	2.1	12	35	4.5	7.3	50	A		8
12	2.2	12	35	4.5	7.2	50	A		8
12	2.3	12	35	4.5	7.1	50	A		8
12	2.4	12	35	4.5	7	50	A		8
12	2.5	12	35	4.5	6.9	50	A		8
12	2.6	12	35	4.5	6.8	50	A		8
12	2.7	12	35	4.5	6.7	50	A		8
12	2.8	12	35	4.5	6.6	50	A		8
12	2.9	12	35	4.5	6.5	50	A		8
12	3	12	35	4.5	6.4	50	A		8
12	3.5	12	35	4.5	5.9	50	A		8
12	4	12	35	4.5	5.4	50	A		8
12	4.5	12	35	4.5	9.9	55	A		8
12	5	12	35	4.5	9.4	55	A		8
12	5.5	12	35	4.5	8.9	55	A		8
12	6	12	35	4.5	8.4	55	A		8
12	7	12	35	4.5	7.4	55	A		8
12	8	12	35	4.5	6.4	55	A		8
13	0.4	12	35	5	9.1	50	A		8
13	0.5	12	35	5	9	50	A		8
13	0.6	12	35	5	8.9	50	A		8
13	0.7	12	35	5	8.8	50	A		8
13	0.8	12	35	5	8.7	50	A		8
13	0.9	12	35	5	8.6	50	A		8
13	1	12	35	5	8.5	50	A		8
13	1.1	12	35	5	8.4	50	A		8
13	1.2	12	35	5	8.3	50	A		8
13	1.3	12	35	5	8.2	50	A		8
13	1.4	12	35	5	8.1	50	A		8
13	1.5	12	35	5	8	50	A		8
13	1.6	12	35	5	7.9	50	A		8
13	1.7	12	35	5	7.8	50	A		8
13	1.8	12	35	5	7.7	50	A		8
13	1.9	12	35	5	7.6	50	A		8
13	2	12	35	5	7.5	50	A		8
13	2.1	12	35	5	7.4	50	A		8
13	2.2	12	35	5	7.3	50	A		8
13	2.3	12	35	5	7.2	50	A		8
13	2.4	12	35	5	7.1	50	A		8
13	2.5	12	35	5	7	50	A		8
13	2.6	12	35	5	6.9	50	A		8
13	2.7	12	35	5	6.8	50	A		8
13	2.8	12	35	5	6.7	50	A		8
13	2.9	12	35	5	6.6	50	A		8
13	3	12	35	5	6.5	50	B	7	8
13	3.5	12	35	5	6	50	B	7	8
13	4	12	35	5	5.5	50	B	7	8
13	4.5	12	35	5	10	55	B	7	8
13	5	12	35	5	9.5	55	B	7	8
13	5.5	12	35	5	9	55	B	7	8
13	6	12	35	5	8.5	55	B	7	8
13	7	12	35	5	7.5	55	B	7	8
13	8	12	35	5	6.5	55	B	7	8
14	0.4	12	35	5.5	9.2	50	A		8
14	0.5	12	35	5.5	9.1	50	A		8
14	0.6	12	35	5.5	9	50	A		8

KC

キーシードカッター
Woodruff Key-Seat Cutter

外径 φD	刃幅 L c	柄径 φ d	柄長 L 1	首径 φ d 1	首長(フラット) (L 2)	全長 L	形状	逃げ径 φ W	刃数
14	0.7	12	35	5.5	8.9	50	A		8
14	0.8	12	35	5.5	8.8	50	A		8
14	0.9	12	35	5.5	8.7	50	A		8
14	1	12	35	5.5	8.6	50	A		8
14	1.1	12	35	5.5	8.5	50	A		8
14	1.2	12	35	5.5	8.4	50	A		8
14	1.3	12	35	5.5	8.3	50	A		8
14	1.4	12	35	5.5	8.2	50	A		8
14	1.5	12	35	5.5	8.1	50	A		8
14	1.6	12	35	5.5	8	50	A		8
14	1.7	12	35	5.5	7.9	50	A		8
14	1.8	12	35	5.5	7.8	50	A		8
14	1.9	12	35	5.5	7.7	50	A		8
14	2	12	35	5.5	7.6	50	A		8
14	2.1	12	35	5.5	7.5	50	A		8
14	2.2	12	35	5.5	7.4	50	A		8
14	2.3	12	35	5.5	7.3	50	A		8
14	2.4	12	35	5.5	7.2	50	A		8
14	2.5	12	35	5.5	7.1	50	A		8
14	2.6	12	35	5.5	7	50	A		8
14	2.7	12	35	5.5	6.9	50	A		8
14	2.8	12	35	5.5	6.8	50	A		8
14	2.9	12	35	5.5	6.7	50	A		8
14	3	12	35	5.5	6.6	50	B	8	8
14	3.5	12	35	5.5	6.1	50	B	8	8
14	4	12	35	5.5	5.6	50	B	8	8
14	4.5	12	35	5.5	10.1	55	B	8	8
14	5	12	35	5.5	9.6	55	B	8	8
14	5.5	12	35	5.5	9.1	55	B	8	8
14	6	12	35	5.5	8.6	55	B	8	8
14	7	12	35	5.5	7.6	55	B	8	8
14	8	12	35	5.5	6.6	55	B	8	8
15	0.4	12	40	5.5	12.2	58	A		8
15	0.5	12	40	5.5	12.1	58	A		8
15	0.6	12	40	5.5	12	58	A		8
15	0.7	12	40	5.5	11.9	58	A		8
15	0.8	12	40	5.5	11.8	58	A		8
15	0.9	12	40	5.5	11.7	58	A		8
15	1	12	40	5.5	11.6	58	A		8
15	1.1	12	40	5.5	11.5	58	A		8
15	1.2	12	40	5.5	11.4	58	A		8
15	1.3	12	40	5.5	11.3	58	A		8
15	1.4	12	40	5.5	11.2	58	A		8
15	1.5	12	40	5.5	11.1	58	A		8
15	1.6	12	40	5.5	11	58	A		8
15	1.7	12	40	5.5	10.9	58	A		8
15	1.8	12	40	5.5	10.8	58	A		8
15	1.9	12	40	5.5	10.7	58	A		8
15	2	12	40	5.5	10.6	58	A		8
15	2.1	12	40	5.5	10.5	58	A		8
15	2.2	12	40	5.5	10.4	58	A		8
15	2.3	12	40	5.5	10.3	58	A		8
15	2.4	12	40	5.5	10.2	58	A		8
15	2.5	12	40	5.5	10.1	58	A		8
15	2.6	12	40	5.5	10	58	A		8
15	2.7	12	40	5.5	9.9	58	A		8
15	2.8	12	40	5.5	9.8	58	A		8
15	2.9	12	40	5.5	9.7	58	A		8

外径 φ D	刃幅 L c	柄径 φ d	柄長 L 1	首径 φ d 1	首長(フラット) (L 2)	全長 L	形状	逃げ径 φ W	刃数
15	3	12	40	5.5	9.6	58	B	9	8
15	3.5	12	40	5.5	11.1	60	B	9	8
15	4	12	40	5.5	10.6	60	B	9	8
15	4.5	12	40	5.5	10.1	60	B	9	8
15	5	12	40	5.5	9.6	60	B	9	8
15	5.5	12	40	5.5	9.1	60	B	9	8
15	6	12	40	5.5	8.6	60	B	9	8
15	7	12	40	5.5	7.6	60	B	9	8
15	8	12	40	5.5	9.6	63	B	9	8
15	9	12	40	5.5	8.6	63	B	9	8
15	10	12	40	5.5	7.6	63	B	9	8
16	0.4	12	40	6	12.4	58	A		10
16	0.5	12	40	6	12.3	58	A		10
16	0.6	12	40	6	12.2	58	A		10
16	0.7	12	40	6	12.1	58	A		10
16	0.8	12	40	6	12	58	A		10
16	0.9	12	40	6	11.9	58	A		10
16	1	12	40	6	11.8	58	A		10
16	1.1	12	40	6	11.7	58	A		10
16	1.2	12	40	6	11.6	58	A		10
16	1.3	12	40	6	11.5	58	A		10
16	1.4	12	40	6	11.4	58	A		10
16	1.5	12	40	6	11.3	58	A		10
16	1.6	12	40	6	11.2	58	A		10
16	1.7	12	40	6	11.1	58	A		10
16	1.8	12	40	6	11	58	A		10
16	1.9	12	40	6	10.9	58	A		10
16	2	12	40	6	10.8	58	A		10
16	2.1	12	40	6	10.7	58	A		10
16	2.2	12	40	6	10.6	58	A		10
16	2.3	12	40	6	10.5	58	A		10
16	2.4	12	40	6	10.4	58	A		10
16	2.5	12	40	6	10.3	58	A		10
16	2.6	12	40	6	10.2	58	A		10
16	2.7	12	40	6	10.1	58	A		10
16	2.8	12	40	6	10	58	A		10
16	2.9	12	40	6	9.9	58	A		10
16	3	12	40	6	9.8	58	B	9	10
16	3.5	12	40	6	11.3	60	B	9	10
16	4	12	40	6	10.8	60	B	9	10
16	4.5	12	40	6	10.3	60	B	9	10
16	5	12	40	6	9.8	60	B	9	10
16	5.5	12	40	6	9.3	60	B	9	10
16	6	12	40	6	8.8	60	B	9	10
16	7	12	40	6	7.8	60	B	9	10
16	8	12	40	6	9.8	63	B	9	10
16	9	12	40	6	8.8	63	B	9	10
16	10	12	40	6	7.8	63	B	9	10
18	0.4	12	40	6.5	13.1	58	A		10
18	0.5	12	40	6.5	13	58	A		10
18	0.6	12	40	6.5	12.9	58	A		10
18	0.7	12	40	6.5	12.8	58	A		10
18	0.8	12	40	6.5	12.7	58	A		10
18	0.9	12	40	6.5	12.6	58	A		10
18	1	12	40	6.5	12.5	58	A		10
18	1.1	12	40	6.5	12.4	58	A		10
18	1.2	12	40	6.5	12.3	58	A		10

KC

キーシードカッター
Woodruff Key-Seat Cutter

外径 φ D	刃幅 L c	柄径 φ d	柄長 L 1	首径 φ d 1	首長(フラット) (L 2)	全長 L	形状	逃げ径 φ W	刃数
18	1.3	12	40	6.5	12.2	58	A		10
18	1.4	12	40	6.5	12.1	58	A		10
18	1.5	12	40	6.5	12	58	A		10
18	1.6	12	40	6.5	11.9	58	A		10
18	1.7	12	40	6.5	11.8	58	A		10
18	1.8	12	40	6.5	11.7	58	A		10
18	1.9	12	40	6.5	11.6	58	A		10
18	2	12	40	6.5	11.5	58	A		10
18	2.1	12	40	6.5	11.4	58	A		10
18	2.2	12	40	6.5	11.3	58	A		10
18	2.3	12	40	6.5	11.2	58	A		10
18	2.4	12	40	6.5	11.1	58	A		10
18	2.5	12	40	6.5	11	58	A		10
18	2.6	12	40	6.5	10.9	58	A		10
18	2.7	12	40	6.5	10.8	58	A		10
18	2.8	12	40	6.5	10.7	58	A		10
18	2.9	12	40	6.5	10.6	58	A		10
18	3	12	40	6.5	10.5	58	B	11	10
18	3.5	12	40	6.5	12	60	B	11	10
18	4	12	40	6.5	11.5	60	B	11	10
18	4.5	12	40	6.5	11	60	B	11	10
18	5	12	40	6.5	10.5	60	B	11	10
18	5.5	12	40	6.5	10	60	B	11	10
18	6	12	40	6.5	9.5	60	B	11	10
18	7	12	40	6.5	8.5	60	B	11	10
18	8	12	40	6.5	10.5	63	B	11	10
18	9	12	40	6.5	9.5	63	B	11	10
18	10	12	40	6.5	8.5	63	B	11	10
19	0.4	12	40	6.5	13.1	58	A		12
19	0.5	12	40	6.5	13	58	A		12
19	0.6	12	40	6.5	12.9	58	A		12
19	0.7	12	40	6.5	12.8	58	A		12
19	0.8	12	40	6.5	12.7	58	A		12
19	0.9	12	40	6.5	12.6	58	A		12
19	1	12	40	6.5	12.5	58	A		12
19	1.1	12	40	6.5	12.4	58	A		12
19	1.2	12	40	6.5	12.3	58	A		12
19	1.3	12	40	6.5	12.2	58	A		12
19	1.4	12	40	6.5	12.1	58	A		12
19	1.5	12	40	6.5	12	58	A		12
19	1.6	12	40	6.5	11.9	58	A		12
19	1.7	12	40	6.5	11.8	58	A		12
19	1.8	12	40	6.5	11.7	58	A		12
19	1.9	12	40	6.5	11.6	58	A		12
19	2	12	40	6.5	11.5	58	A		12
19	2.1	12	40	6.5	11.4	58	A		12
19	2.2	12	40	6.5	11.3	58	A		12
19	2.3	12	40	6.5	11.2	58	A		12
19	2.4	12	40	6.5	11.1	58	A		12
19	2.5	12	40	6.5	11	58	A		12
19	2.6	12	40	6.5	10.9	58	A		12
19	2.7	12	40	6.5	10.8	58	A		12
19	2.8	12	40	6.5	10.7	58	A		12
19	2.9	12	40	6.5	10.6	58	A		12
19	3	12	40	6.5	10.5	58	B	11	12
19	3.5	12	40	6.5	12	60	B	11	12
19	4	12	40	6.5	11.5	60	B	11	12
19	4.5	12	40	6.5	11	60	B	11	12

外径 φ D	刃幅 L c	柄径 φ d	柄長 L 1	首径 φ d 1	首長(フラット) (L 2)	全長 L	形状	逃げ径 φ W	刃数
19	5	12	40	6.5	10.5	60	B	11	12
19	5.5	12	40	6.5	10	60	B	11	12
19	6	12	40	6.5	9.5	60	B	11	12
19	7	12	40	6.5	8.5	60	B	11	12
19	8	12	40	6.5	10.5	63	B	11	12
19	9	12	40	6.5	9.5	63	B	11	12
19	10	12	40	6.5	8.5	63	B	11	12
19	12	12	40	6.5	8.5	65	B	11	12
20	0.4	12	40	6.5	13.1	58	A		12
20	0.5	12	40	6.5	13	58	A		12
20	0.6	12	40	6.5	12.9	58	A		12
20	0.7	12	40	6.5	12.8	58	A		12
20	0.8	12	40	6.5	12.7	58	A		12
20	0.9	12	40	6.5	12.6	58	A		12
20	1	12	40	6.5	12.5	58	A		12
20	1.1	12	40	6.5	12.4	58	A		12
20	1.2	12	40	6.5	12.3	58	A		12
20	1.3	12	40	6.5	12.2	58	A		12
20	1.4	12	40	6.5	12.1	58	A		12
20	1.5	12	40	6.5	12	58	A		12
20	1.6	12	40	6.5	11.9	58	A		12
20	1.7	12	40	6.5	11.8	58	A		12
20	1.8	12	40	6.5	11.7	58	A		12
20	1.9	12	40	6.5	11.6	58	A		12
20	2	12	40	6.5	11.5	58	A		12
20	2.1	12	40	6.5	11.4	58	A		12
20	2.2	12	40	6.5	11.3	58	A		12
20	2.3	12	40	6.5	11.2	58	A		12
20	2.4	12	40	6.5	11.1	58	A		12
20	2.5	12	40	6.5	11	58	A		12
20	2.6	12	40	6.5	10.9	58	A		12
20	2.7	12	40	6.5	10.8	58	A		12
20	2.8	12	40	6.5	10.7	58	A		12
20	2.9	12	40	6.5	10.6	58	A		12
20	3	12	40	6.5	10.5	58	B	12	12
20	3.1	12	40	6.5	12.4	60	B	12	12
20	3.2	12	40	6.5	12.3	60	B	12	12
20	3.3	12	40	6.5	12.2	60	B	12	12
20	3.4	12	40	6.5	12.1	60	B	12	12
20	3.5	12	40	6.5	12	60	B	12	12
20	4	12	40	6.5	11.5	60	B	12	12
20	4.5	12	40	6.5	11	60	B	12	12
20	5	12	40	6.5	10.5	60	B	12	12
20	5.5	12	40	6.5	10	60	B	12	12
20	6	12	40	6.5	9.5	60	B	12	12
20	7	12	40	6.5	8.5	60	B	12	12
20	8	12	40	6.5	10.5	63	B	12	12
20	9	12	40	6.5	9.5	63	B	12	12
20	10	12	40	6.5	8.5	63	B	12	12
20	12	12	40	6.5	8.5	65	B	12	12
22	0.4	12	40	7	13.5	58	A		12
22	0.5	12	40	7	13.4	58	A		12
22	0.6	12	40	7	13.3	58	A		12
22	0.7	12	40	7	13.2	58	A		12
22	0.8	12	40	7	13.1	58	A		12
22	0.9	12	40	7	13	58	A		12
22	1	12	40	7	12.9	58	A		12

KC

キーシードカッター
Woodruff Key-Seat Cutter

外径 φ D	刃幅 L c	柄径 φ d	柄長 L 1	首径 φ d 1	首長(フラット) (L 2)	全長 L	形状	逃げ径 φ W	刃数
22	1.1	12	40	7	12.8	58	A		12
22	1.2	12	40	7	12.7	58	A		12
22	1.3	12	40	7	12.6	58	A		12
22	1.4	12	40	7	12.5	58	A		12
22	1.5	12	40	7	12.4	58	A		12
22	1.6	12	40	7	12.3	58	A		12
22	1.7	12	40	7	12.2	58	A		12
22	1.8	12	40	7	12.1	58	A		12
22	1.9	12	40	7	12	58	A		12
22	2	12	40	7	11.9	58	A		12
22	2.1	12	40	7	11.8	58	A		12
22	2.2	12	40	7	11.7	58	A		12
22	2.3	12	40	7	11.6	58	A		12
22	2.4	12	40	7	11.5	58	A		12
22	2.5	12	40	7	11.4	58	A		12
22	2.6	12	40	7	11.3	58	A		12
22	2.7	12	40	7	11.2	58	A		12
22	2.8	12	40	7	11.1	58	A		12
22	2.9	12	40	7	11	58	A		12
22	3	12	40	7	10.9	58	B	15	12
22	3.1	12	40	7	12.8	60	B	15	12
22	3.2	12	40	7	12.7	60	B	15	12
22	3.3	12	40	7	12.6	60	B	15	12
22	3.4	12	40	7	12.5	60	B	15	12
22	3.5	12	40	7	12.4	60	B	15	12
22	4	12	40	7	11.9	60	B	15	12
22	4.5	12	40	7	11.4	60	B	15	12
22	5	12	40	7	10.9	60	B	15	12
22	5.5	12	40	7	10.4	60	B	15	12
22	6	12	40	7	9.9	60	B	15	12
22	7	12	40	7	8.9	60	B	15	12
22	8	12	40	7	10.9	63	B	15	12
22	9	12	40	7	9.9	63	B	15	12
22	10	12	40	7	8.9	63	B	15	12
24	0.4	12	40	7.5	13.7	58	A		12
24	0.5	12	40	7.5	13.6	58	A		12
24	0.6	12	40	7.5	13.5	58	A		12
24	0.7	12	40	7.5	13.4	58	A		12
24	0.8	12	40	7.5	13.3	58	A		12
24	0.9	12	40	7.5	13.2	58	A		12
24	1	12	40	7.5	13.1	58	A		12
24	1.1	12	40	7.5	13	58	A		12
24	1.2	12	40	7.5	12.9	58	A		12
24	1.3	12	40	7.5	12.8	58	A		12
24	1.4	12	40	7.5	12.7	58	A		12
24	1.5	12	40	7.5	12.6	58	A		12
24	1.6	12	40	7.5	12.5	58	A		12
24	1.7	12	40	7.5	12.4	58	A		12
24	1.8	12	40	7.5	12.3	58	A		12
24	1.9	12	40	7.5	12.2	58	A		12
24	2	12	40	7.5	12.1	58	A		12
24	2.1	12	40	7.5	12	58	A		12
24	2.2	12	40	7.5	11.9	58	A		12
24	2.3	12	40	7.5	11.8	58	A		12
24	2.4	12	40	7.5	11.7	58	A		12
24	2.5	12	40	7.5	11.6	58	A		12
24	2.6	12	40	7.5	11.5	58	A		12
24	2.7	12	40	7.5	11.4	58	A		12

外径 φ D	刃幅 L c	柄径 φ d	柄長 L 1	首径 φ d 1	首長(フラット) (L 2)	全長 L	形状	逃げ径 φ W	刃数
24	2.8	12	40	7.5	11.3	58	A		12
24	2.9	12	40	7.5	11.2	58	A		12
24	3	12	40	7.5	11.1	58	B	15	12
24	3.1	12	40	7.5	13	60	B	15	12
24	3.2	12	40	7.5	12.9	60	B	15	12
24	3.3	12	40	7.5	12.8	60	B	15	12
24	3.4	12	40	7.5	12.7	60	B	15	12
24	3.5	12	40	7.5	12.6	60	B	15	12
24	4	12	40	7.5	12.1	60	B	15	12
24	4.5	12	40	7.5	11.6	60	B	15	12
24	5	12	40	7.5	11.1	60	B	15	12
24	5.5	12	40	7.5	10.6	60	B	15	12
24	6	12	40	7.5	10.1	60	B	15	12
24	7	12	40	7.5	9.1	60	B	15	12
24	8	12	40	7.5	11.1	63	B	15	12
24	9	12	40	7.5	10.1	63	B	15	12
24	10	12	40	7.5	9.1	63	B	15	12
24	12	12	40	7.5	9.1	65	B	15	12
25	0.4	12	40	7.5	15.7	60	A		14
25	0.5	12	40	7.5	15.6	60	A		14
25	0.6	12	40	7.5	15.5	60	A		14
25	0.7	12	40	7.5	15.4	60	A		14
25	0.8	12	40	7.5	15.3	60	A		14
25	0.9	12	40	7.5	15.2	60	A		14
25	1	12	40	7.5	15.1	60	A		14
25	1.1	12	40	7.5	15	60	A		14
25	1.2	12	40	7.5	14.9	60	A		14
25	1.3	12	40	7.5	14.8	60	A		14
25	1.4	12	40	7.5	14.7	60	A		14
25	1.5	12	40	7.5	14.6	60	A		14
25	1.6	12	40	7.5	14.5	60	A		14
25	1.7	12	40	7.5	14.4	60	A		14
25	1.8	12	40	7.5	14.3	60	A		14
25	1.9	12	40	7.5	14.2	60	A		14
25	2	12	40	7.5	14.1	60	A		14
25	2.1	12	40	7.5	14	60	A		14
25	2.2	12	40	7.5	13.9	60	A		14
25	2.3	12	40	7.5	13.8	60	A		14
25	2.4	12	40	7.5	13.7	60	A		14
25	2.5	12	40	7.5	13.6	60	A		14
25	2.6	12	40	7.5	13.5	60	A		14
25	2.7	12	40	7.5	13.4	60	A		14
25	2.8	12	40	7.5	13.3	60	A		14
25	2.9	12	40	7.5	13.2	60	A		14
25	3	12	40	7.5	13.1	60	B	17	14
25	3.1	12	40	7.5	16	63	B	17	14
25	3.2	12	40	7.5	15.9	63	B	17	14
25	3.3	12	40	7.5	15.8	63	B	17	14
25	3.4	12	40	7.5	15.7	63	B	17	14
25	3.5	12	40	7.5	15.6	63	B	17	14
25	4	12	40	7.5	15.1	63	B	17	14
25	4.5	12	40	7.5	14.6	63	B	17	14
25	5	12	40	7.5	14.1	63	B	17	14
25	5.5	12	40	7.5	15.6	65	B	17	14
25	6	12	40	7.5	15.1	65	B	17	14
25	7	12	40	7.5	14.1	65	B	17	14
25	8	12	40	7.5	13.1	65	B	17	14
25	9	12	40	7.5	12.1	65	B	17	14

KC

キーシードカッター
Woodruff Key-Seat Cutter

外径 φ D	刃幅 L c	柄径 φ d	柄長 L 1	首径 φ d 1	首長(フラット) (L 2)	全長 L	形状	逃げ径 φ W	刃数
25	10	12	40	7.5	16.1	70	B	17	14
25	11	12	40	7.5	15.1	70	B	17	14
25	12	12	40	7.5	14.1	70	B	17	14
26	0.4	12	40	8	15.8	60	A		14
26	0.5	12	40	8	15.7	60	A		14
26	0.6	12	40	8	15.6	60	A		14
26	0.7	12	40	8	15.5	60	A		14
26	0.8	12	40	8	15.4	60	A		14
26	0.9	12	40	8	15.3	60	A		14
26	1	12	40	8	15.2	60	A		14
26	1.1	12	40	8	15.1	60	A		14
26	1.2	12	40	8	15	60	A		14
26	1.3	12	40	8	14.9	60	A		14
26	1.4	12	40	8	14.8	60	A		14
26	1.5	12	40	8	14.7	60	A		14
26	1.6	12	40	8	14.6	60	A		14
26	1.7	12	40	8	14.5	60	A		14
26	1.8	12	40	8	14.4	60	A		14
26	1.9	12	40	8	14.3	60	A		14
26	2	12	40	8	14.2	60	A		14
26	2.1	12	40	8	14.1	60	A		14
26	2.2	12	40	8	14	60	A		14
26	2.3	12	40	8	13.9	60	A		14
26	2.4	12	40	8	13.8	60	A		14
26	2.5	12	40	8	13.7	60	A		14
26	2.6	12	40	8	13.6	60	A		14
26	2.7	12	40	8	13.5	60	A		14
26	2.8	12	40	8	13.4	60	A		14
26	2.9	12	40	8	13.3	60	A		14
26	3	12	40	8	13.2	60	B	19	14
26	3.1	12	40	8	16.1	63	B	19	14
26	3.2	12	40	8	16	63	B	19	14
26	3.3	12	40	8	15.9	63	B	19	14
26	3.4	12	40	8	15.8	63	B	19	14
26	3.5	12	40	8	15.7	63	B	19	14
26	4	12	40	8	15.2	63	B	19	14
26	4.5	12	40	8	14.7	63	B	19	14
26	5	12	40	8	14.2	63	B	19	14
26	5.5	12	40	8	15.7	65	B	19	14
26	6	12	40	8	15.2	65	B	19	14
26	7	12	40	8	14.2	65	B	19	14
26	8	12	40	8	13.2	65	B	19	14
26	9	12	40	8	12.2	65	B	19	14
26	10	12	40	8	16.2	70	B	19	14
26	11	12	40	8	15.2	70	B	19	14
26	12	12	40	8	14.2	70	B	19	14
28	0.4	12	40	8.5	16.2	60	A		14
28	0.5	12	40	8.5	16.1	60	A		14
28	0.6	12	40	8.5	16	60	A		14
28	0.7	12	40	8.5	15.9	60	A		14
28	0.8	12	40	8.5	15.8	60	A		14
28	0.9	12	40	8.5	15.7	60	A		14
28	1	12	40	8.5	15.6	60	A		14
28	1.1	12	40	8.5	15.5	60	A		14
28	1.2	12	40	8.5	15.4	60	A		14
28	1.3	12	40	8.5	15.3	60	A		14
28	1.4	12	40	8.5	15.2	60	A		14

外径 φ D	刃幅 L c	柄径 φ d	柄長 L 1	首径 φ d 1	首長(フラット) (L 2)	全長 L	形状	逃げ径 φ W	刃数
28	1.5	12	40	8.5	15.1	60	A		14
28	1.6	12	40	8.5	15	60	A		14
28	1.7	12	40	8.5	14.9	60	A		14
28	1.8	12	40	8.5	14.8	60	A		14
28	1.9	12	40	8.5	14.7	60	A		14
28	2	12	40	8.5	14.6	60	A		14
28	2.1	12	40	8.5	14.5	60	A		14
28	2.2	12	40	8.5	14.4	60	A		14
28	2.3	12	40	8.5	14.3	60	A		14
28	2.4	12	40	8.5	14.2	60	A		14
28	2.5	12	40	8.5	14.1	60	A		14
28	2.6	12	40	8.5	14	60	A		14
28	2.7	12	40	8.5	13.9	60	A		14
28	2.8	12	40	8.5	13.8	60	A		14
28	2.9	12	40	8.5	13.7	60	A		14
28	3	12	40	8.5	13.6	60	B	19	14
28	3.1	12	40	8.5	16.5	63	B	19	14
28	3.2	12	40	8.5	16.4	63	B	19	14
28	3.3	12	40	8.5	16.3	63	B	19	14
28	3.4	12	40	8.5	16.2	63	B	19	14
28	3.5	12	40	8.5	16.1	63	B	19	14
28	4	12	40	8.5	15.6	63	B	19	14
28	4.5	12	40	8.5	15.1	63	B	19	14
28	5	12	40	8.5	14.6	63	B	19	14
28	5.5	12	40	8.5	16.1	65	B	19	14
28	6	12	40	8.5	15.6	65	B	19	14
28	7	12	40	8.5	14.6	65	B	19	14
28	8	12	40	8.5	13.6	65	B	19	14
28	9	12	40	8.5	12.6	65	B	19	14
28	10	12	40	8.5	16.6	70	B	19	14
28	11	12	40	8.5	15.6	70	B	19	14
28	12	12	40	8.5	14.6	70	B	19	14
30	0.4	12	40	8.7	16.3	60	A		14
30	0.5	12	40	8.7	16.2	60	A		14
30	0.6	12	40	8.7	16.1	60	A		14
30	0.7	12	40	8.7	16	60	A		14
30	0.8	12	40	8.7	15.9	60	A		14
30	0.9	12	40	8.7	15.8	60	A		14
30	1	12	40	8.7	15.7	60	A		14
30	1.1	12	40	8.7	15.6	60	A		14
30	1.2	12	40	8.7	15.5	60	A		14
30	1.3	12	40	8.7	15.4	60	A		14
30	1.4	12	40	8.7	15.3	60	A		14
30	1.5	12	40	8.7	15.2	60	A		14
30	1.6	12	40	8.7	15.1	60	A		14
30	1.7	12	40	8.7	15	60	A		14
30	1.8	12	40	8.7	14.9	60	A		14
30	1.9	12	40	8.7	14.8	60	A		14
30	2	12	40	8.7	14.7	60	A		14
30	2.1	12	40	8.7	14.6	60	A		14
30	2.2	12	40	8.7	14.5	60	A		14
30	2.3	12	40	8.7	14.4	60	A		14
30	2.4	12	40	8.7	14.3	60	A		14
30	2.5	12	40	8.7	14.2	60	A		14
30	2.6	12	40	8.7	14.1	60	A		14
30	2.7	12	40	8.7	14	60	A		14
30	2.8	12	40	8.7	13.9	60	A		14
30	2.9	12	40	8.7	13.8	60	A		14

KC

キーシードカッター
Woodruff Key-Seat Cutter

外径 φ D	刃幅 L c	柄径 φ d	柄長 L 1	首径 φ d 1	首長(フラット) (L 2)	全長 L	形状	逃げ径 φ W	刃数
30	3	12	40	8.7	13.7	60	B	22	14
30	3.1	12	40	8.7	16.6	63	B	22	14
30	3.2	12	40	8.7	16.5	63	B	22	14
30	3.3	12	40	8.7	16.4	63	B	22	14
30	3.4	12	40	8.7	16.3	63	B	22	14
30	3.5	12	40	8.7	16.2	63	B	22	14
30	4	12	40	8.7	15.7	63	B	22	14
30	4.5	12	40	8.7	15.2	63	B	22	14
30	5	12	40	8.7	14.7	63	B	22	14
30	5.5	12	40	8.7	16.2	65	B	22	14
30	6	12	40	8.7	15.7	65	B	22	14
30	7	12	40	8.7	14.7	65	B	22	14
30	8	12	40	8.7	13.7	65	B	22	14
30	9	12	40	8.7	12.7	65	B	22	14
30	10	12	40	8.7	16.7	70	B	22	14
30	11	12	40	8.7	15.7	70	B	22	14
30	12	12	40	8.7	14.7	70	B	22	14
32	0.4	12	42	9	14.4	60	A		14
32	0.5	12	42	9	14.3	60	A		14
32	0.6	12	42	9	14.2	60	A		14
32	0.7	12	42	9	14.1	60	A		14
32	0.8	12	42	9	14	60	A		14
32	0.9	12	42	9	13.9	60	A		14
32	1	12	42	9	13.8	60	A		14
32	1.1	12	42	9	13.7	60	A		14
32	1.2	12	42	9	13.6	60	A		14
32	1.3	12	42	9	13.5	60	A		14
32	1.4	12	42	9	13.4	60	A		14
32	1.5	12	42	9	13.3	60	A		14
32	1.6	12	42	9	13.2	60	A		14
32	1.7	12	42	9	13.1	60	A		14
32	1.8	12	42	9	13	60	A		14
32	1.9	12	42	9	12.9	60	A		14
32	2	12	42	9	12.8	60	A		14
32	2.1	12	42	9	12.7	60	A		14
32	2.2	12	42	9	12.6	60	A		14
32	2.3	12	42	9	12.5	60	A		14
32	2.4	12	42	9	12.4	60	A		14
32	2.5	12	42	9	12.3	60	A		14
32	2.6	12	42	9	12.2	60	A		14
32	2.7	12	42	9	12.1	60	A		14
32	2.8	12	42	9	12	60	A		14
32	2.9	12	42	9	11.9	60	A		14
32	3	12	42	9	11.8	60	B	24	14
32	3.5	12	42	9	14.3	63	B	24	14
32	4	12	42	9	13.8	63	B	24	14
32	4.5	12	42	9	13.3	63	B	24	14
32	5	12	42	9	12.8	63	B	24	14
32	5.5	12	42	9	14.3	65	B	24	14
32	6	12	42	9	13.8	65	B	24	14
32	7	12	42	9	12.8	65	B	24	14
32	8	12	42	9	11.8	65	B	24	14
32	9	12	42	9	10.8	65	B	24	14
32	10	12	42	9	14.8	70	B	24	14
32	11	12	42	9	13.8	70	B	24	14
32	12	12	42	9	12.8	70	B	24	14
32	13	12	42	9	11.8	70	B	24	14
32	14	12	42	9	10.8	70	B	24	14

外径 φ D	刃幅 L c	柄径 φ d	柄長 L 1	首径 φ d 1	首長(フラット) (L 2)	全長 L	形状	逃げ径 φ W	刃数
32	15	12	42	9	14.8	75	B	24	14
35	0.4	12	42	10	15.3	60	A		16
35	0.5	12	42	10	15.2	60	A		16
35	0.6	12	42	10	15.1	60	A		16
35	0.7	12	42	10	15	60	A		16
35	0.8	12	42	10	14.9	60	A		16
35	0.9	12	42	10	14.8	60	A		16
35	1	12	42	10	14.7	60	A		16
35	1.1	12	42	10	14.6	60	A		16
35	1.2	12	42	10	14.5	60	A		16
35	1.3	12	42	10	14.4	60	A		16
35	1.4	12	42	10	14.3	60	A		16
35	1.5	12	42	10	14.2	60	A		16
35	1.6	12	42	10	14.1	60	A		16
35	1.7	12	42	10	14	60	A		16
35	1.8	12	42	10	13.9	60	A		16
35	1.9	12	42	10	13.8	60	A		16
35	2	12	42	10	13.7	60	A		16
35	2.1	12	42	10	13.6	60	A		16
35	2.2	12	42	10	13.5	60	A		16
35	2.3	12	42	10	13.4	60	A		16
35	2.4	12	42	10	13.3	60	A		16
35	2.5	12	42	10	13.2	60	A		16
35	2.6	12	42	10	13.1	60	A		16
35	2.7	12	42	10	13	60	A		16
35	2.8	12	42	10	12.9	60	A		16
35	2.9	12	42	10	12.8	60	A		16
35	3	12	42	10	12.7	60	B	27	16
35	3.5	12	42	10	15.2	63	B	27	16
35	4	12	42	10	14.7	63	B	27	16
35	4.5	12	42	10	14.2	63	B	27	16
35	5	12	42	10	13.7	63	B	27	16
35	5.5	12	42	10	15.2	65	B	27	16
35	6	12	42	10	14.7	65	B	27	16
35	7	12	42	10	13.7	65	B	27	16
35	8	12	42	10	12.7	65	B	27	16
35	9	12	42	10	11.7	65	B	27	16
35	10	12	42	10	15.7	70	B	27	16
35	11	12	42	10	14.7	70	B	27	16
35	12	12	42	10	13.7	70	B	27	16
35	13	12	42	10	12.7	70	B	27	16
35	14	12	42	10	11.7	70	B	27	16
35	15	12	42	10	15.7	75	B	27	16
38	1	12	42	10.5	15	60	A		16
38	1.1	12	42	10.5	14.9	60	A		16
38	1.2	12	42	10.5	14.8	60	A		16
38	1.3	12	42	10.5	14.7	60	A		16
38	1.4	12	42	10.5	14.6	60	A		16
38	1.5	12	42	10.5	14.5	60	A		16
38	1.6	12	42	10.5	14.4	60	A		16
38	1.7	12	42	10.5	14.3	60	A		16
38	1.8	12	42	10.5	14.2	60	A		16
38	1.9	12	42	10.5	14.1	60	A		16
38	2	12	42	10.5	14	60	A		16
38	2.1	12	42	10.5	13.9	60	A		16
38	2.2	12	42	10.5	13.8	60	A		16
38	2.3	12	42	10.5	13.7	60	A		16

KC

キーシードカッター
Woodruff Key-Seat Cutter

外径 φ D	刃幅 L c	柄径 φ d	柄長 L 1	首径 φ d 1	首長(フラット) (L 2)	全長 L	形状	逃げ径 φ W	刃数
38	2.4	12	42	10.5	13.6	60	A		16
38	2.5	12	42	10.5	13.5	60	A		16
38	2.6	12	42	10.5	13.4	60	A		16
38	2.7	12	42	10.5	13.3	60	A		16
38	2.8	12	42	10.5	13.2	60	A		16
38	2.9	12	42	10.5	13.1	60	A		16
38	3	12	42	10.5	13	60	B	28	16
38	3.5	12	42	10.5	15.5	63	B	28	16
38	4	12	42	10.5	15	63	B	28	16
38	4.5	12	42	10.5	14.5	63	B	28	16
38	5	12	42	10.5	14	63	B	28	16
38	5.5	12	42	10.5	15.5	65	B	28	16
38	6	12	42	10.5	15	65	B	28	16
38	7	12	42	10.5	14	65	B	28	16
38	8	12	42	10.5	13	65	B	28	16
38	9	12	42	10.5	12	65	B	28	16
38	10	12	42	10.5	16	70	B	28	16
38	11	12	42	10.5	15	70	B	28	16
38	12	12	42	10.5	14	70	B	28	16
38	13	12	42	10.5	13	70	B	28	16
38	14	12	42	10.5	12	70	B	28	16
38	15	12	42	10.5	16	75	B	28	16
40	1	12	42	11.5	16	60	A		16
40	1.1	12	42	11.5	15.9	60	A		16
40	1.2	12	42	11.5	15.8	60	A		16
40	1.3	12	42	11.5	15.7	60	A		16
40	1.4	12	42	11.5	15.6	60	A		16
40	1.5	12	42	11.5	15.5	60	A		16
40	1.6	12	42	11.5	15.4	60	A		16
40	1.7	12	42	11.5	15.3	60	A		16
40	1.8	12	42	11.5	15.2	60	A		16
40	1.9	12	42	11.5	15.1	60	A		16
40	2	12	42	11.5	15	60	A		16
40	2.1	12	42	11.5	14.9	60	A		16
40	2.2	12	42	11.5	14.8	60	A		16
40	2.3	12	42	11.5	14.7	60	A		16
40	2.4	12	42	11.5	14.6	60	A		16
40	2.5	12	42	11.5	14.5	60	A		16
40	2.6	12	42	11.5	14.4	60	A		16
40	2.7	12	42	11.5	14.3	60	A		16
40	2.8	12	42	11.5	14.2	60	A		16
40	2.9	12	42	11.5	14.1	60	A		16
40	3	12	42	11.5	14	60	B	31	16
40	3.5	12	42	11.5	16.5	63	B	31	16
40	4	12	42	11.5	16	63	B	31	16
40	4.5	12	42	11.5	15.5	63	B	31	16
40	5	12	42	11.5	15	63	B	31	16
40	5.5	12	42	11.5	16.5	65	B	31	16
40	6	12	42	11.5	16	65	B	31	16
40	7	12	42	11.5	15	65	B	31	16
40	8	12	42	11.5	14	65	B	31	16
40	9	12	42	11.5	13	65	B	31	16
40	10	12	42	11.5	17	70	B	31	16
40	11	12	42	11.5	16	70	B	31	16
40	12	12	42	11.5	15	70	B	31	16
40	13	12	42	11.5	14	70	B	31	16
40	14	12	42	11.5	13	70	B	31	16
40	15	12	42	11.5	17	75	B	31	16

外径 φ D	刃幅 L c	柄径 φ d	柄長 L 1	首径 φ d 1	首長(フラット) (L 2)	全長 L	形状	逃げ径 φ W	刃数
42	1	12	42	11.5	16	60	A		16
42	1.1	12	42	11.5	15.9	60	A		16
42	1.2	12	42	11.5	15.8	60	A		16
42	1.3	12	42	11.5	15.7	60	A		16
42	1.4	12	42	11.5	15.6	60	A		16
42	1.5	12	42	11.5	15.5	60	A		16
42	1.6	12	42	11.5	15.4	60	A		16
42	1.7	12	42	11.5	15.3	60	A		16
42	1.8	12	42	11.5	15.2	60	A		16
42	1.9	12	42	11.5	15.1	60	A		16
42	2	12	42	11.5	15	60	A		16
42	2.1	12	42	11.5	14.9	60	A		16
42	2.2	12	42	11.5	14.8	60	A		16
42	2.3	12	42	11.5	14.7	60	A		16
42	2.4	12	42	11.5	14.6	60	A		16
42	2.5	12	42	11.5	14.5	60	A		16
42	2.6	12	42	11.5	14.4	60	A		16
42	2.7	12	42	11.5	14.3	60	A		16
42	2.8	12	42	11.5	14.2	60	A		16
42	2.9	12	42	11.5	14.1	60	A		16
42	3	12	42	11.5	14	60	B	33	16
42	3.5	12	42	11.5	16.5	63	B	33	16
42	4	12	42	11.5	16	63	B	33	16
42	5	12	42	11.5	15	63	B	33	16
42	6	12	42	11.5	16	65	B	33	16
42	7	12	42	11.5	15	65	B	33	16
42	8	12	42	11.5	14	65	B	33	16
42	9	12	42	11.5	13	65	B	33	16
42	10	12	42	11.5	17	70	B	33	16
42	11	12	42	11.5	16	70	B	33	16
42	12	12	42	11.5	15	70	B	33	16
42	13	12	42	11.5	14	70	B	33	16
45	1	12	42	11.5	16	60	A		16
45	1.1	12	42	11.5	15.9	60	A		16
45	1.2	12	42	11.5	15.8	60	A		16
45	1.3	12	42	11.5	15.7	60	A		16
45	1.4	12	42	11.5	15.6	60	A		16
45	1.5	12	42	11.5	15.5	60	A		16
45	1.6	12	42	11.5	15.4	60	A		16
45	1.7	12	42	11.5	15.3	60	A		16
45	1.8	12	42	11.5	15.2	60	A		16
45	1.9	12	42	11.5	15.1	60	A		16
45	2	12	42	11.5	15	60	A		16
45	2.1	12	42	11.5	14.9	60	A		16
45	2.2	12	42	11.5	14.8	60	A		16
45	2.3	12	42	11.5	14.7	60	A		16
45	2.4	12	42	11.5	14.6	60	A		16
45	2.5	12	42	11.5	14.5	60	A		16
45	2.6	12	42	11.5	14.4	60	A		16
45	2.7	12	42	11.5	14.3	60	A		16
45	2.8	12	42	11.5	14.2	60	A		16
45	2.9	12	42	11.5	14.1	60	A		16
45	3	12	42	11.5	14	60	B	36	16
45	3.5	12	42	11.5	16.5	63	B	36	16
45	4	12	42	11.5	16	63	B	36	16
45	4.5	12	42	11.5	15.5	63	B	36	16
45	5	12	42	11.5	15	63	B	36	16
45	5.5	12	42	11.5	16.5	65	B	36	16

KC

キーシードカッター

Woodruff Key-Seat Cutter

外径 φ D	刃幅 L c	柄径 φ d	柄長 L 1	首径 φ d 1	首長(フラット) (L 2)	全長 L	形状	逃げ径 φ W	刃数
45	6	12	42	11.5	16	65	B	36	16
45	7	12	42	11.5	15	65	B	36	16
45	8	12	42	11.5	14	65	B	36	16
45	9	12	42	11.5	13	65	B	36	16
45	10	12	42	11.5	17	70	B	36	16
45	11	12	42	11.5	16	70	B	36	16
45	12	12	42	11.5	15	70	B	36	16
48	1	12	42	11.5	16	60	A		16
48	1.1	12	42	11.5	15.9	60	A		16
48	1.2	12	42	11.5	15.8	60	A		16
48	1.3	12	42	11.5	15.7	60	A		16
48	1.4	12	42	11.5	15.6	60	A		16
48	1.5	12	42	11.5	15.5	60	A		16
48	1.6	12	42	11.5	15.4	60	A		16
48	1.7	12	42	11.5	15.3	60	A		16
48	1.8	12	42	11.5	15.2	60	A		16
48	1.9	12	42	11.5	15.1	60	A		16
48	2	12	42	11.5	15	60	A		16
48	2.1	12	42	11.5	14.9	60	A		16
48	2.2	12	42	11.5	14.8	60	A		16
48	2.3	12	42	11.5	14.7	60	A		16
48	2.4	12	42	11.5	14.6	60	A		16
48	2.5	12	42	11.5	14.5	60	A		16
48	2.6	12	42	11.5	14.4	60	A		16
48	2.7	12	42	11.5	14.3	60	A		16
48	2.8	12	42	11.5	14.2	60	A		16
48	2.9	12	42	11.5	14.1	60	A		16
48	3	12	42	11.5	14	60	B	37	16
48	3.5	12	42	11.5	16.5	63	B	37	16
48	4	12	42	11.5	16	63	B	37	16
48	4.5	12	42	11.5	15.5	63	B	37	16
48	5	12	42	11.5	15	63	B	37	16
48	5.5	12	42	11.5	16.5	65	B	37	16
48	6	12	42	11.5	16	65	B	37	16
48	7	12	42	11.5	15	65	B	37	16
48	8	12	42	11.5	14	65	B	37	16
48	9	12	42	11.5	13	65	B	37	16
48	10	12	42	11.5	17	70	B	37	16
48	11	12	42	11.5	16	70	B	37	16
48	12	12	42	11.5	15	70	B	37	16
50	1	12	42	11.5	16	60	A		16
50	1.1	12	42	11.5	15.9	60	A		16
50	1.2	12	42	11.5	15.8	60	A		16
50	1.3	12	42	11.5	15.7	60	A		16
50	1.4	12	42	11.5	15.6	60	A		16
50	1.5	12	42	11.5	15.5	60	A		16
50	1.6	12	42	11.5	15.4	60	A		16
50	1.7	12	42	11.5	15.3	60	A		16
50	1.8	12	42	11.5	15.2	60	A		16
50	1.9	12	42	11.5	15.1	60	A		16
50	2	12	42	11.5	15	60	A		16
50	2.1	12	42	11.5	14.9	60	A		16
50	2.2	12	42	11.5	14.8	60	A		16
50	2.3	12	42	11.5	14.7	60	A		16
50	2.4	12	42	11.5	14.6	60	A		16
50	2.5	12	42	11.5	14.5	60	A		16
50	2.6	12	42	11.5	14.4	60	A		16

外径 φ D	刃幅 L c	柄径 φ d	柄長 L 1	首径 φ d 1	首長(フラット) (L 2)	全長 L	形状	逃げ径 φ W	刃数
50	2.7	12	42	11.5	14.3	60	A		16
50	2.8	12	42	11.5	14.2	60	A		16
50	2.9	12	42	11.5	14.1	60	A		16
50	3	12	42	11.5	14	60	B	39	16
50	3.5	12	42	11.5	16.5	63	B	39	16
50	4	12	42	11.5	16	63	B	39	16
50	4.5	12	42	11.5	15.5	63	B	39	16
50	5	12	42	11.5	15	63	B	39	16
50	5.5	12	42	11.5	16.5	65	B	39	16
50	6	12	42	11.5	16	65	B	39	16
50	7	12	42	11.5	15	65	B	39	16
50	8	12	42	11.5	14	65	B	39	16
50	9	12	42	11.5	13	65	B	39	16
50	10	12	42	11.5	17	70	B	39	16
50	11	12	42	11.5	16	70	B	39	16
50	12	12	42	11.5	15	70	B	39	16
50	13	12	42	11.5	14	70	B	39	16
50	14	12	42	11.5	13	70	B	39	16
50	15	12	42	11.5	17	75	B	39	16
50	16	12	42	11.5	16	75	B	39	16
55	1	20	70	18	21.7	95	A		16
55	1.5	20	70	18	21.2	95	A		16
55	2	20	70	18	20.7	95	A		16
55	2.5	20	70	18	20.2	95	A		16
55	3	20	70	18	19.7	95	B	44	16
55	3.5	20	70	18	19.2	95	B	44	16
55	4	20	70	18	18.7	95	B	44	16
55	4.5	20	70	18	21.2	98	B	44	16
55	5	20	70	18	20.7	98	B	44	16
55	6	20	70	18	19.7	98	B	44	16
55	7	20	70	18	18.7	98	B	44	16
55	8	20	70	18	19.7	100	B	44	16
55	9	20	70	18	18.7	100	B	44	16
55	10	20	70	18	17.7	100	B	44	16
55	11	20	70	18	19.7	103	B	44	16
55	12	20	70	18	18.7	103	B	44	16
55	13	20	70	18	17.7	108	B	44	16
55	14	20	70	18	16.7	108	B	44	16
60	1	20	70	18	21.7	95	A		18
60	1.5	20	70	18	21.2	95	A		18
60	2	20	70	18	20.7	95	A		18
60	2.5	20	70	18	20.2	95	A		18
60	3	20	70	18	19.7	95	B	47	18
60	3.5	20	70	18	19.2	95	B	47	18
60	4	20	70	18	18.7	95	B	47	18
60	4.5	20	70	18	21.2	98	B	47	18
60	5	20	70	18	20.7	98	B	47	18
60	6	20	70	18	19.7	98	B	47	18
60	7	20	70	18	18.7	98	B	47	18
60	8	20	70	18	19.7	100	B	47	18
60	10	20	70	18	17.7	100	B	47	18
60	12	20	70	18	18.7	103	B	47	18
60	13	20	70	18	22.7	108	B	47	18
60	14	20	70	18	21.7	108	B	47	18
60	15	20	70	18	20.7	108	B	47	18
60	16	20	70	18	19.7	108	B	47	18

KC

キーシードカッター
Woodruff Key-Seat Cutter

外径 φ D	刃幅 L c	柄径 φ d	柄長 L 1	首径 φ d 1	首長(フラット) (L 2)	全長 L	形状	逃げ径 φ W	刃数
65	1.5	20	70	18	31.2	105	A		
65	2	20	70	18	30.7	105	A		18
65	2.5	20	70	18	30.2	105	A		18
65	3	20	70	18	29.7	105	B	49	18
65	3.5	20	70	18	29.2	105	B	49	18
65	4	20	70	18	28.7	105	B	49	18
65	4.5	20	70	18	31.2	108	B	49	18
65	5	20	70	18	30.7	108	B	49	18
65	6	20	70	18	29.7	108	B	49	18
65	7	20	70	18	28.7	108	B	49	18
65	8	20	70	18	29.7	110	B	49	18
65	9	20	70	18	28.7	110	B	49	18
65	10	20	70	18	27.7	110	B	49	18
65	12	20	70	18	28.7	113	B	49	18
70	1.5	20	70	18	31.2	105	A		20
70	2	20	70	18	30.7	105	A		20
70	2.5	20	70	18	30.2	105	A		20
70	3	20	70	18	29.7	105	B	51	20
70	3.5	20	70	18	29.2	105	B	51	20
70	4	20	70	18	28.7	105	B	51	20
70	4.5	20	70	18	31.2	108	B	51	20
70	5	20	70	18	30.7	108	B	51	20
70	6	20	70	18	29.7	108	B	51	20
70	7	20	70	18	28.7	108	B	51	20
70	8	20	70	18	29.7	110	B	51	20
70	9	20	70	18	28.7	110	B	51	20
70	10	20	70	18	27.7	110	B	51	20
70	12	20	70	18	28.7	113	B	51	20
75	1.5	20	70	18	31.2	105	A		20
75	2	20	70	18	30.7	105	A		20
75	2.5	20	70	18	30.2	105	A		20
75	3	20	70	18	29.7	105	B	53	20
75	3.5	20	70	18	29.2	105	B	53	20
75	4	20	70	18	28.7	105	B	53	20
75	4.5	20	70	18	31.2	108	B	53	20
75	5	20	70	18	30.7	108	B	53	20
75	6	20	70	18	29.7	108	B	53	20
75	7	20	70	18	28.7	108	B	53	20
75	8	20	70	18	29.7	110	B	53	20
75	9	20	70	18	28.7	110	B	53	20
75	10	20	70	18	27.7	110	B	53	20
75	12	20	70	18	28.7	113	B	53	20
80	1.5	25	80	23	31.2	115	A		22
80	2	25	80	23	30.7	115	A		22
80	2.5	25	80	23	30.2	115	A		22
80	3	25	80	23	29.7	115	B	56	22
80	3.5	25	80	23	29.2	115	B	56	22
80	4	25	80	23	28.7	115	B	56	22
80	4.5	25	80	23	31.2	118	B	56	22
80	5	25	80	23	30.7	118	B	56	22
80	6	25	80	23	29.7	118	B	56	22
80	7	25	80	23	28.7	118	B	56	22
80	8	25	80	23	29.7	120	B	56	22
80	9	25	80	23	28.7	120	B	56	22
80	10	25	80	23	27.7	120	B	56	22
80	12	25	80	23	28.7	123	B	56	22